



CATÁLOGO
DE TELAS PARA
EXTERIOR
OUTDOOR FABRICS

Silvana[®]
TELAS Y MATERIALES PARA TAPICERIA

OUTDOOR FABRICS 2022

Outdoor Fabrics es capaz de acumular experiencias de producción y documentar la evolución de procesos de color de impresión, piezas y tejidos teñidos en solución que son **perfectos y resistentes a la interperie**.

Los productos teñidos están destinados a ser **el futuro de los textiles** de rendimiento en diversos campos, ayudando en el proceso de innovar y diversificar nuestros productos.

VENTAJAS DE NUESTRAS TELAS



Manufactura amigable con el **medio ambiente**



Escudo integrado **Scotchgard** para larga duración y fácil mantenimiento



Resistencia al clima y a la decoloración



Colores y diseño



Textura **suave** al tacto

USO



CUIDADOS

- No limpiar en seco
- Solo lavado a mano, temp. max 30°C
- No usar secadora
- No usar lejía
- No usar plancha

Silvana[®]
TELAS Y MATERIALES PARA TAPICERIA



CATÁLOGO
DE TELAS PARA
EXTERIOR
OUTDOOR FABRICS

Silvana[®]
TELAS Y MATERIALES PARA TAPICERIA

IMPORTADAS

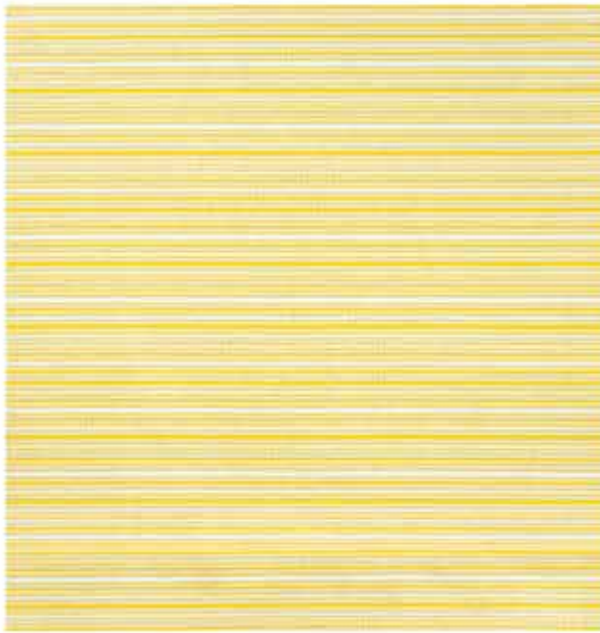
Ancho: **1.45 m**

Martindale: **10,000** ciclos

Composición: **100% Olefina**



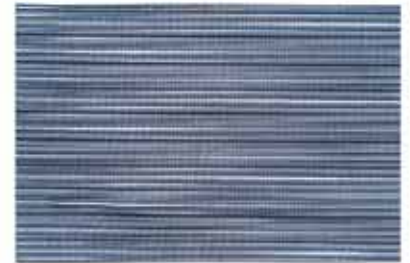
ARVENSE



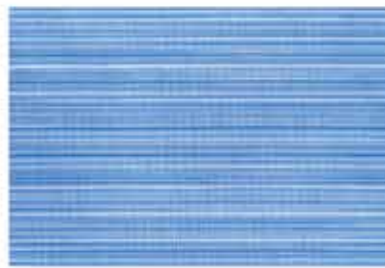
ARVENSE AMARILLO



ARVENSE AQUA



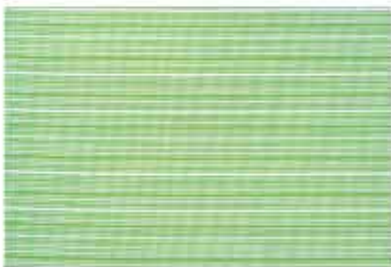
ARVENSE BLACK



ARVENSE CERULEO



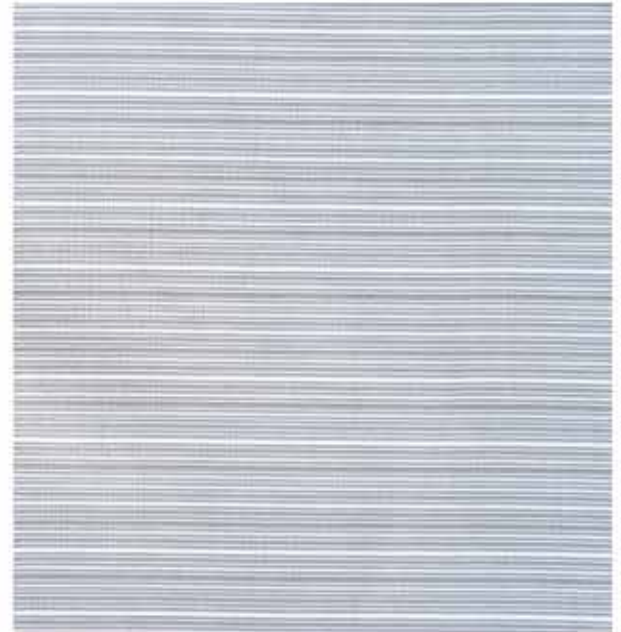
ARVENSE GRANADA



ARVENSE MUSGO



ARVENSE NARANJA



ARVENSE TAUPE



BATRIK



BATRIK AMARILLO



BATRIK AQUA



BATRIK DENIM



BATRIK BLACK



BATRIK CERULEO



BATRIK GRANADA



BATRIK MUSGO



BATRIK NARANJA



BATRIK TAUPE



CRASAS



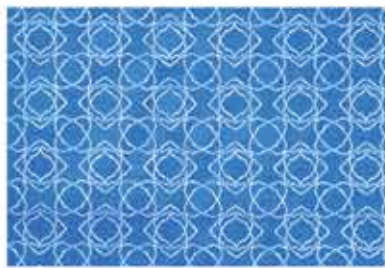
CRASAS AMARILLO



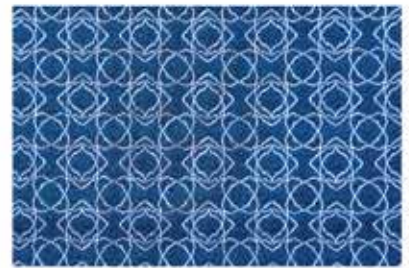
CRASAS AQUA



CRASAS BLACK



CRASAS CERULEO



CRASAS DENIM



CRASAS GRANADA



CRASAS MUSGO



CRASAS NARANJA



CRASAS TAUPE



DRACENA



DRACENA AMARILLO



DRACENA AQUA



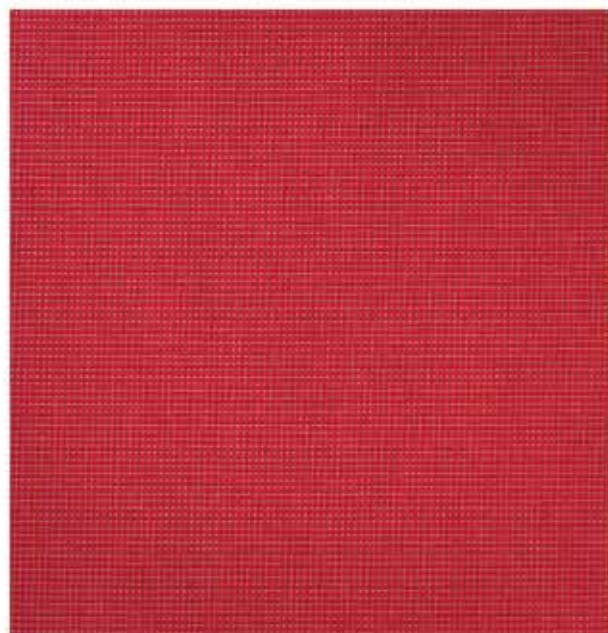
DRACENA DENIM



DRACENA BLACK



DRACENA CERULEO



DRACENA GRANADA



DRACENA MUSGO



DRACENA NARANJA



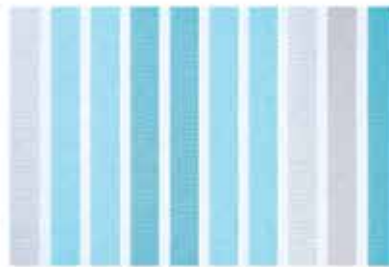
DRACENA TAUPE



EQUUS



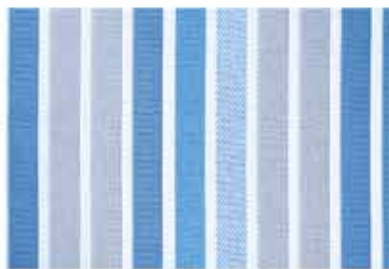
EQUUS AMARILLO



EQUUS AQUA



EQUUS BLACK



EQUUS CERULEO



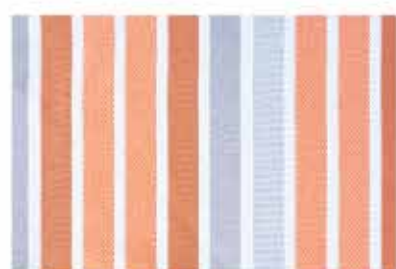
EQUUS DENIM



EQUUS GRANADA



EQUUS MUSGO



EQUUS NARANJA



EQUUS TAUPE



FRAGARIA



FRAGARIA AMARILLO



FRAGARIA AQUA



FRAGARIA DENIM



FRAGARIA BLACK



FRAGARIA CERULEO



FRAGARIA GRANADA



FRAGARIA MUSGO



FRAGARIA NARANJA



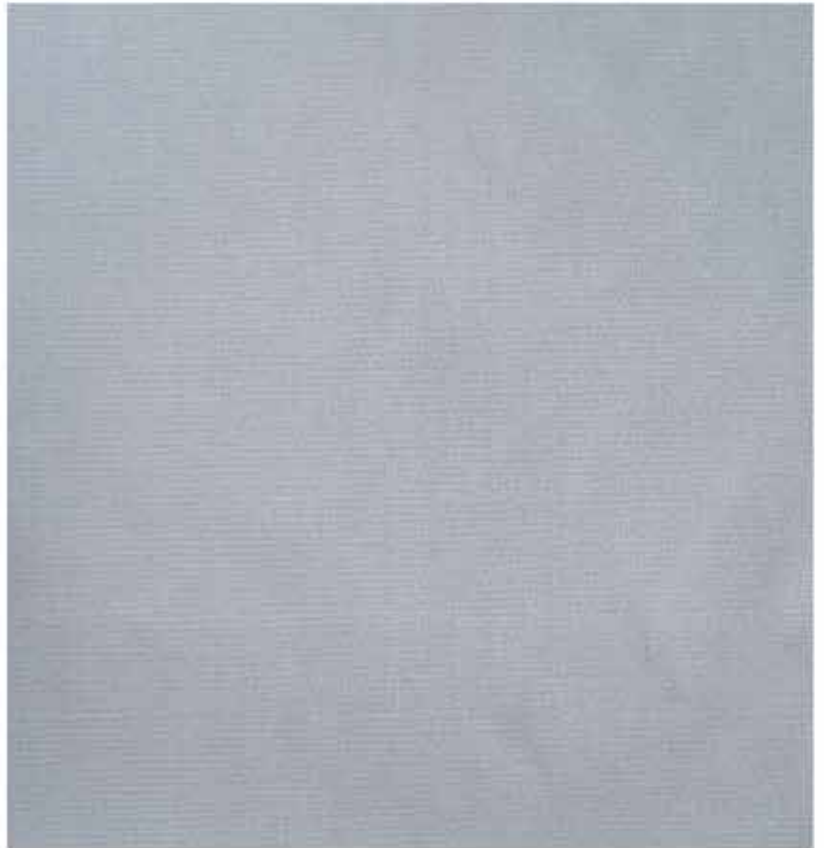
FRAGARIA TAUPE



GALIUM



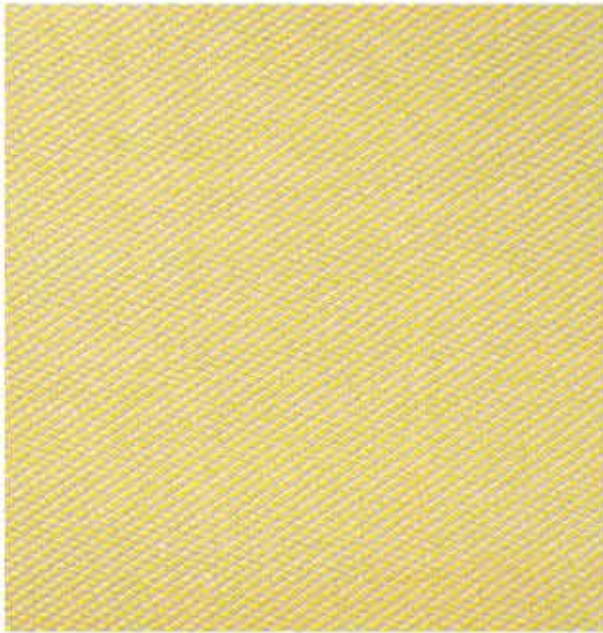
GALIUM IVORY



GALIUM TAUPE



ST. TROPEZ



ST. TROPEZ AMARILLO



ST. TROPEZ BLACK



ST. TROPEZ CEMENTO



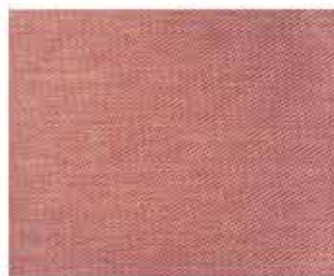
ST. TROPEZ CERULEO



ST. TROPEZ DENIM



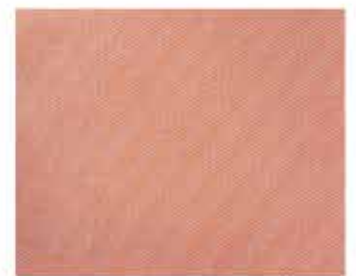
ST. TROPEZ IVORY



ST. TROPEZ LADRILLO



ST. TROPEZ MUSGO



ST. TROPEZ NARANJA



ST. TROPEZ OCEANO
GRIS



ST. TROPEZ TAUPE



ST. TROPEZ AQUA





CATÁLOGO DE TELAS PARA EXTERIOR OUTDOOR FABRICS

Silvana[®]
TELAS Y MATERIALES PARA TAPICERIA

NACIONALES

Ancho **1.40 m**

Martindale: **10,000** ciclos

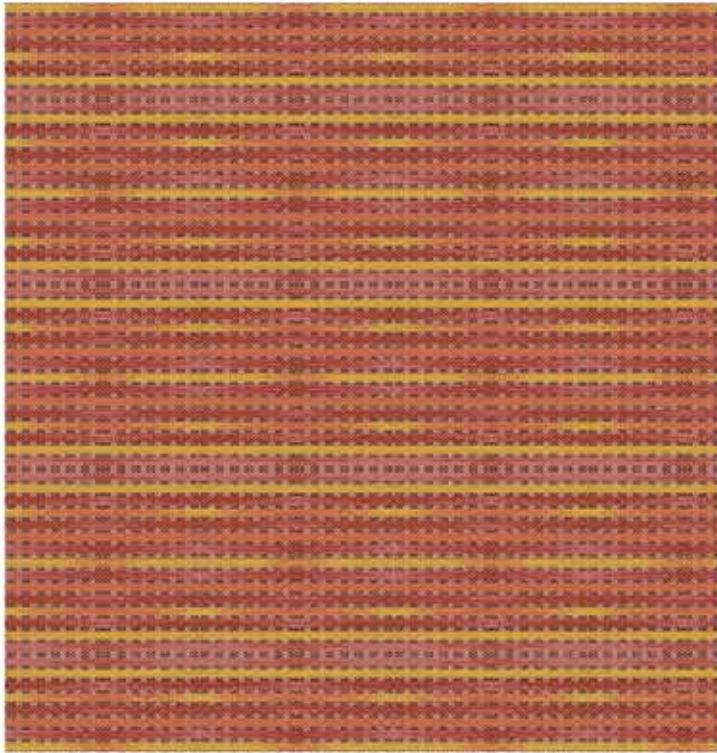
Composición:

57% Polipropileno | 43% Poliester

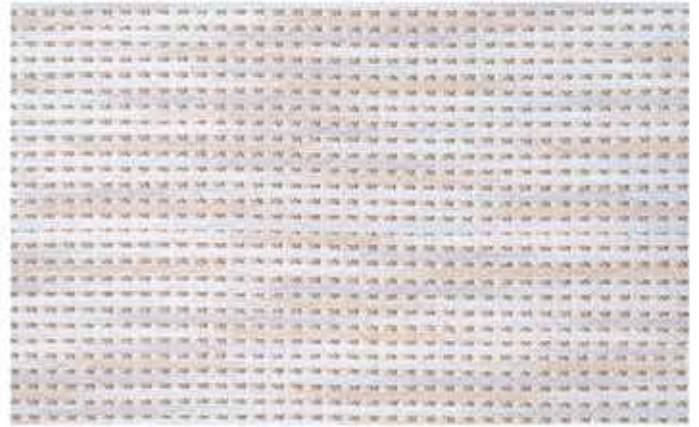
211 GSM



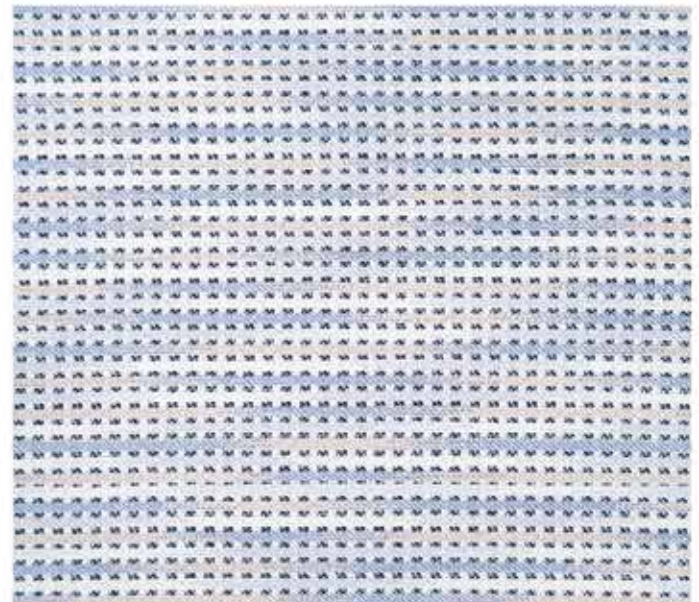
BRISBANE



BRISBANE SUNSET



BRISBANE TAUPE



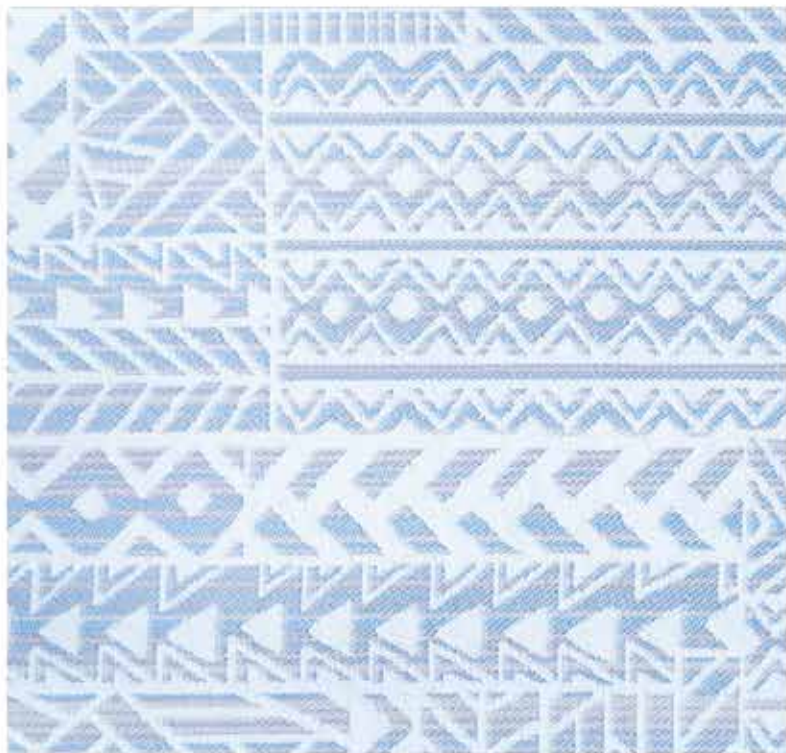
BRISBANE SMOKE



BRISBANE COCOA



MAUI



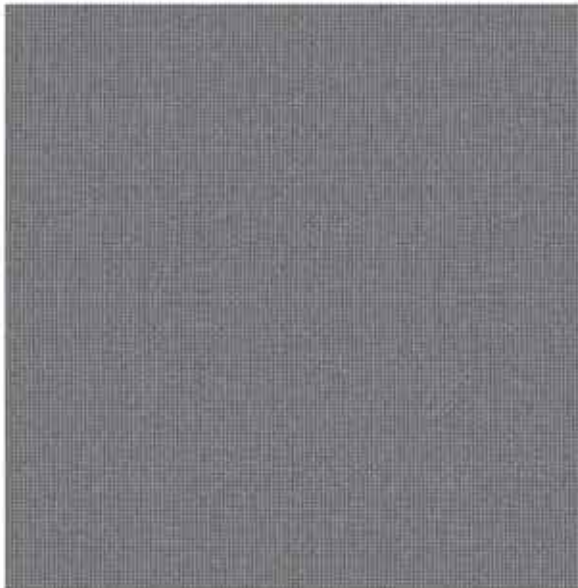
MAUI GRAY BLUE



MAUI BLACK



MELBOURNE



MELBOURNE SILVER



MELBOURNE GREEN



MELBOURNE DENIM



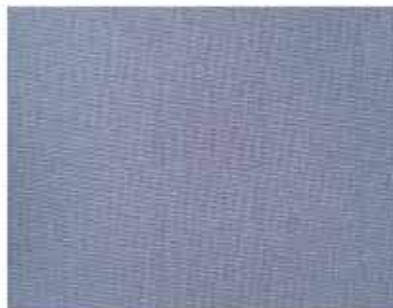
MELBOURNE ORANGE



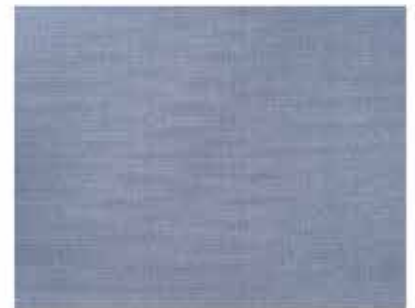
MELBOURNE LEMON



MELBOURNE AQUAMARINE



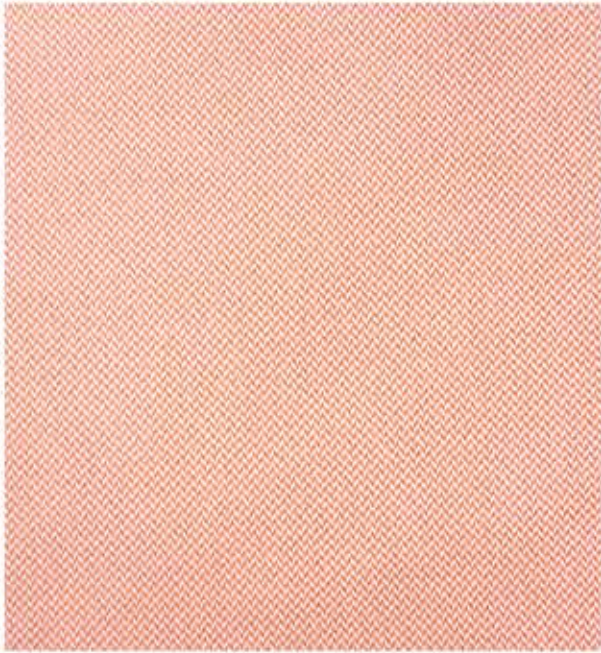
MELBOURNE MIST



MELBOURNE ASH



NIZA



NIZA ORANGE



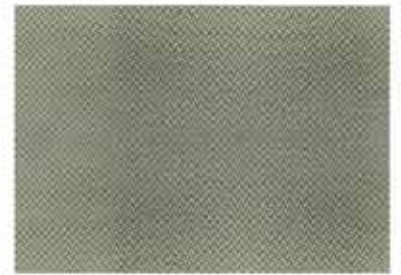
NIZA GOLD



NIZA TAUPE



NIZA AQUA



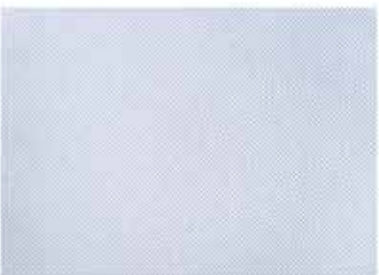
NIZA LEMON



NIZA CORAL



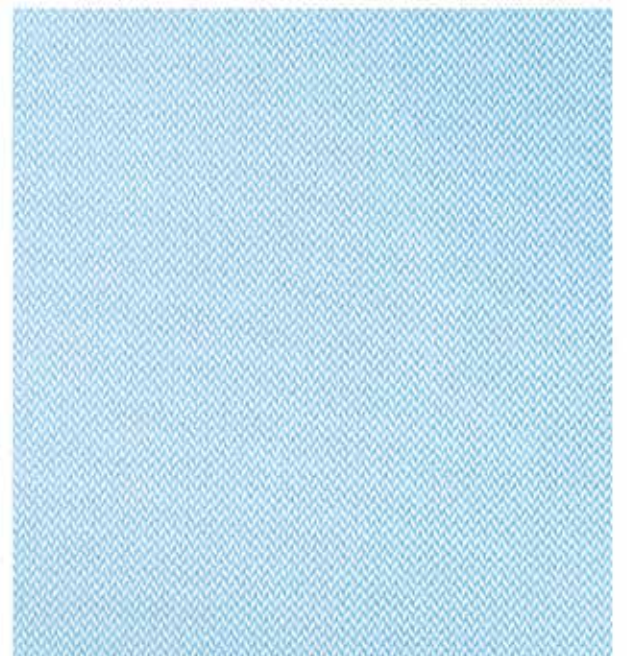
NIZA BLACK



NIZA SMOKE



NIZA DENIM



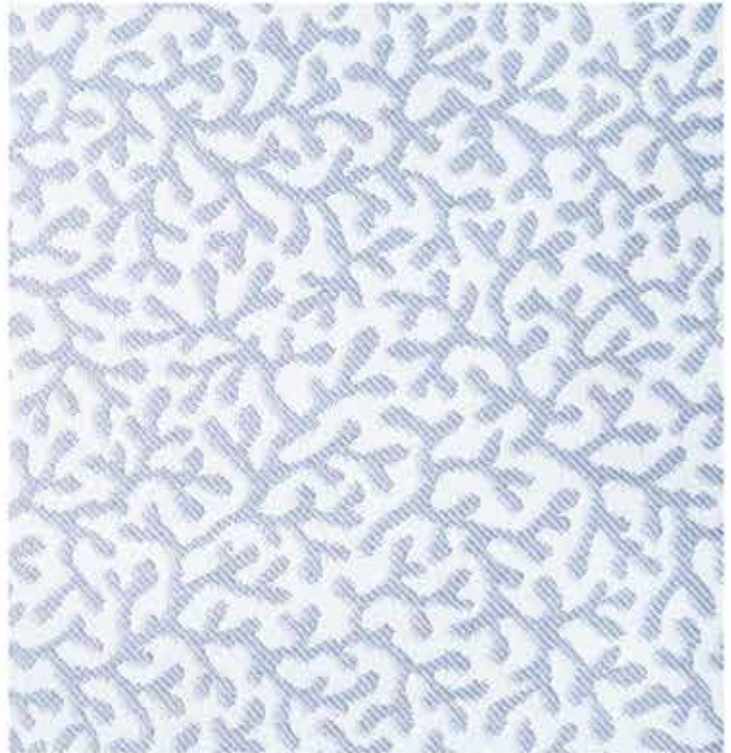
NIZA BLUE



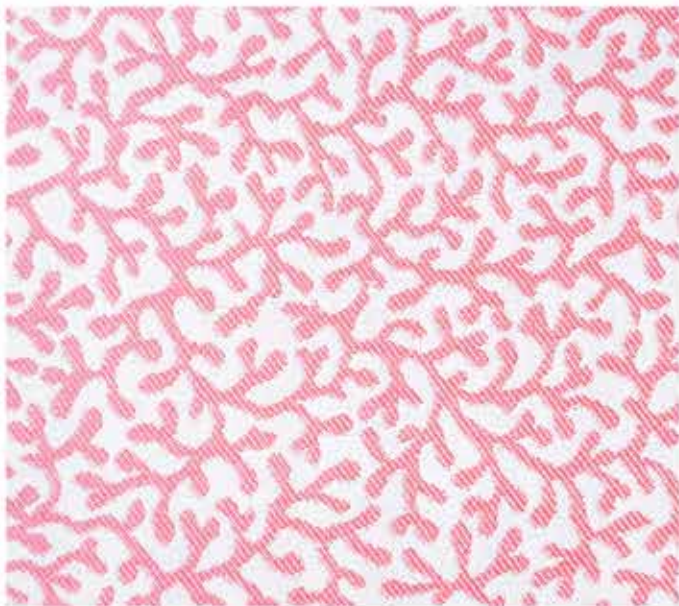
RECIFE



RECIFE BLUE



RECIFE SMOKE



RECIFE CORAL



RECIFE YELLOW



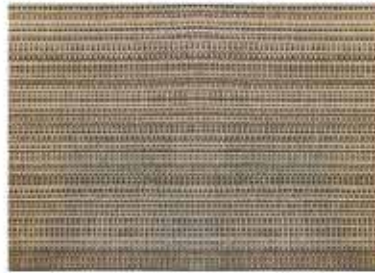
RECIFE TAUPE



TAHITI



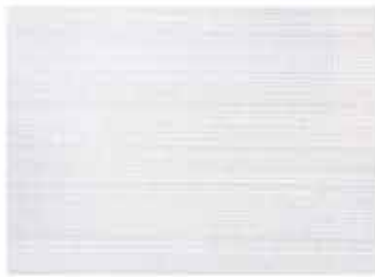
TAHITI GREEN



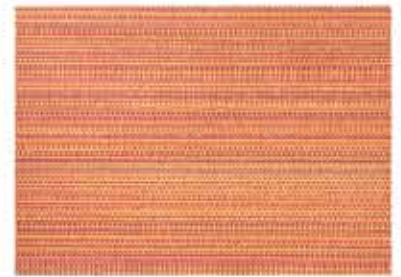
TAHITI BLACK



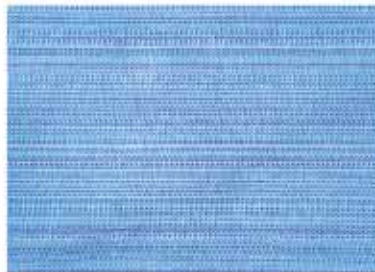
TAHITI SAND



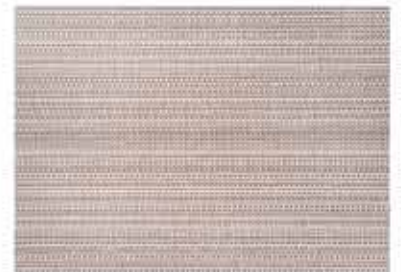
TAHITI SMOKE



TAHITI SUNSET



TAHITI BLUE/SEASIDE



TAHITI CAPUCCINO



TIVA



TIVA CAPUCCINO



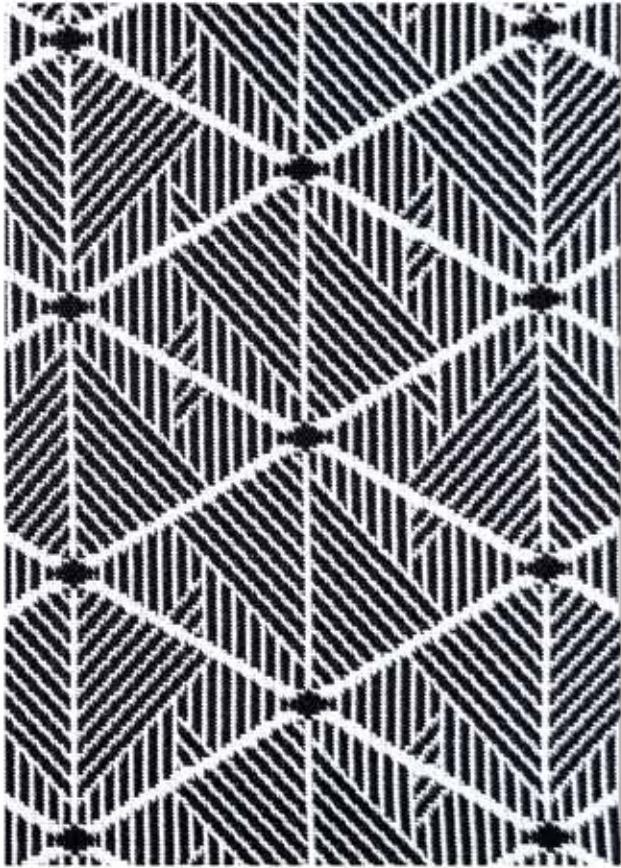
TIVA YELLOW



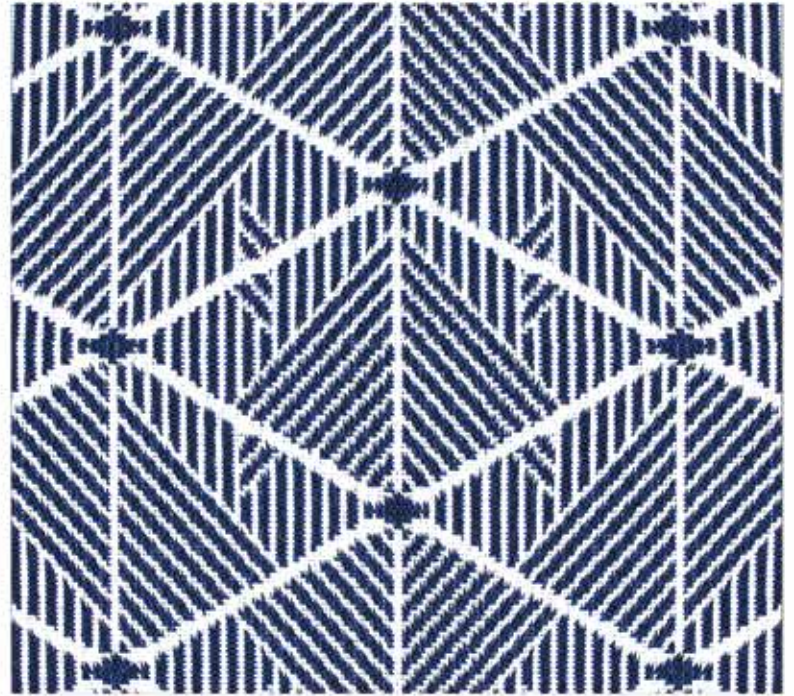
TIVA BEIGE



ZANTE



ZANTE BLACK



ZANTE DENIM

OUTDOOR FABRICS

CRECEMOS
CONTIGO



JALISCO

FEDERACIÓN (GDL)
 Juan R. Zavala #584 y 585
 Col. San Juan Bosco
 CP.44730, Tel.(33) 2264 7624

SANTA ANITA (TLAQ)
 Camino Real a Colima #1488
 Col. Los Cajetes CP. 45600
 Tel.(33) 2696 1952

SANTA TERE (GDL)
 Garibaldi #1493, Col. Santa
 Teresita CP. 44600
 Tel.(33) 3642 5647

TONALÁ
 Av. Tonalá #474, Col. Francisco
 Villa CP. 45402
 Tel.(33) 3792 6064

OCOTLÁN
 Av. 20 de Noviembre #265, Col.
 María Esther Zuno CP. 47800
 Tel.(39) 2118 0909

AGUASCALIENTES

AGUASCALIENTES
 Av. Convención 1914 #720
 Sta. Anita 1a. Sección CP. 20169
 Tel.(449) 636 7480
 (449) 636 7481

CDMX
 Oyamel #305 B, Col. Santa
 María Insurgentes CP. 06430
 Tel.(55) 2616 5049

GUANAJUATO
LEÓN
 Blvd. Antonio Madrazo #217
 Col. Las Trojes CP. 37227
 Tel.(477) 775 7645

SAN LUIS POTOSÍ
SAN LUIS POTOSÍ
 Av. Nicolas Zapata #536, De
 Tequisquiapan CP. 78230
 Tel.(444) 793 1058,
 (444) 793 1059

COAHUILA

SALTILLO
 Abasolo Norte #3833, Col. Alpes
 CP. 25270, Tel.(844) 287 7098 y
 (844) 287 7099

TORREÓN
 Av. Juárez #541 bis Oriente
 Col. Segundo de Cobian
 CP. 27000, Tel. (871) 680 4978
 (871) 680 4979

SINALOA
CULIACÁN
 Río Churubusco #715, Col.
 Morelos Tel.(669) 116 0250
 CP. 80120

MAZATLÁN
 Av. Juan Pablo II #2912
 Col. 20 de Noviembre CP. 82018
 Tel.(669) 194 3344

NUEVO LEÓN

MONTERREY
 San Juan de los Lagos #4021
 Col. Los altos CP. 64370
 Tel.(81) 8351 0888

QUINTANA ROO
CANCÚN
 SM 4, MZ 27, Lote 1-2.
 Puerto Cancún, Col. Zona Hotelera.
 CP. 77500, Plaza Van Dutch
 Tel. (999) 949 3912

Silvana[®]
 TELAS Y MATERIALES PARA TAPICERÍA

Silvana[®]

TELAS Y MATERIALES PARA TAPICERIA

 33 2310 9198

    silvanamxoficial



silvana.mx